

SOUNDERS & BEACONS (VADS)



Base Sounder
Part Number **CON431A/CX/W**
(pictured with head & base)



96DB(A) BASE SOUNDER, CON431A/CX/W

- Third-party certified to EN54-3 (Sounder) & 17 (Isolator)
- Impressive 96dB(A) sound output @ 1m
- Onboard short-circuit loop isolator
- Group addressing facility allows multiple devices to operate simultaneously
- Ideal for mounting under ContextPlus detectors in corridors, stairwells & open spaces
- Suitable for use with DIL Switch & XPERT Card detectors
- Optional BF330CTLIDW cap available for stand-alone use
- 5mA alarm current @24VDC
- 550uA quiescent current
- 112mm diameter, 46mm deep (base only). IP21C (Type A) rated

Optional Voice Sounder version also available - order code BF454A/CX/W



Base Sounder & Beacon
Part Number **CON456A/CX/W**
(pictured with head & base)

COMBINED 96DB(A) BASE SOUNDER & BEACON, CON456A/CX/W

- Third-party certified to EN54-3 (Sounder), 17 (Isolator) & 23 (VAD)
- Impressive 96dB(A) sound output @ 1m
- C-3-8 light distribution with twin LEDs for consistent coverage
- Onboard short-circuit loop isolator
- Group addressing facility allows multiple devices to operate simultaneously
- Ideal for mounting under ContextPlus detectors in corridors, stairwells & open spaces
- Suitable for use with DIL Switch & XPERTCard detectors
- Optional BF330CTLIDW cap available for stand-alone use
- 14mA alarm current @24VDC
- 550uA quiescent current
- 112mm diameter, 46mm deep (base only). IP21C (Type A) rated

Optional Voice Sounder version also available - order code BF457A/CX/W



Compact Wall/Ceiling Sounder
Part Number **CON450/CX/SR**



COMPACT 91DB(A) WALL/CEILING SOUNDER, CON450A/CX/SR

- Third-party certified to EN54-3 (Sounder) & 17 (Isolator)
- Impressive 91dB(A) sound output @ 1m.
- Onboard short-circuit loop isolator
- Group addressing facility allows multiple devices to operate simultaneously
- 5mA alarm current @24V DC (sounder on max).
- 550uA quiescent current
- 102mm diameter, 63mm deep. IP21C (Type A) rated.



Compact Beacon
Part Number **CON451A/CX/SR**
Part Number **CON458A/CX/SR**



COMBINED 91DB(A) WALL/CEILING SOUNDER & BEACON, CON451A/CX/SR

- Third-party certified to EN54-3 (Sounder), 17 (Isolator) & 23 (VAD)
- Impressive 91dB(A) sound output @ 1m.
- C-3-8 light distribution (on ceiling)
- W-3-2.1 light distribution (on wall)
- Onboard short-circuit loop isolator.
- Group addressing facility allows multiple devices to operate simultaneously
- 14mA alarm current @24V DC (VAD lit, sounder on max).
- 550uA quiescent current
- 102mm diameter, 63mm deep. IP21C (Type A) rated.

COMPACT BEACON ONLY, CON458A/CX/SR

- Third-party certified to 17 (Isolator) & 23 (VAD)
- C-3-8 light distribution (on ceiling)
- W-3-2.1 light distribution (on wall)
- 10mA alarm current @24VDC (VAD lit)
- 550uA quiescent current
- 102mm diameter, 63mm deep. IP21C (Type A) rated

SOUNDERS & BEACONS (VADS)



Hi-Output Wall Beacon/Sounder
Part Number CON433A/CX/DR

Hi-Output Wall Beacon c/w 103dB(A) Sounder (deep base), CON433A/CX/DR

- Third-party certified to EN54-3 (Sounders), EN54-23 (VADs) and 17 (Isolators) by the LPCB.
- Provides 'W-2.4-8.2' light distribution when wall mounted (min 0.4 lux over a 2.4m x8.2m cuboid area).
- Impressive 103dB(A) sound output @ 1m.
- Onboard short-circuit loop isolator.
- 550µA quiescent current.
- 14mA alarm current @24V DC (VAD lit, sounder on max).
- Group addressing facility allows multiple devices to be operated simultaneously.
- 7 selectable volume levels and up to 15 selectable tone pairs.
- IP33C (Type B) rated.



Hi-Output Wall Sounder
Part Number CON430A/CX/DR

Hi-Output 103dB(A) Wall Sounder (deep base), CON430A/CX/DR

- Third-party certified to EN54-3 (Sounders) and 17 (Isolators) by the LPCB.
- Impressive 103dB(A) sound output @ 1m.
- Onboard short-circuit loop isolator.
- 550µA quiescent current.
- 5mA alarm current @24V DC (sounder on max).
- Group addressing facility allows multiple devices to be operated simultaneously.
- 7 selectable volume levels and up to 15 selectable tone pairs.
- IP33C (Type A) rated.



Hi-Output Wall Beacon/Sounder
Part Number CON433A/CX/DR/65

Hi-Output Wall Beacon c/w 103dB(A) Sounder, IP65, CON433A/CX/DR/65

- Powerful 103dB(A) sound output @ 1m
- W-2.4-8.2 light distribution
- Weather resistant to IP65
- Onboard short-circuit loop isolator.
- Group addressing facility allows multiple devices to operate simultaneously
- 14mA alarm current @24V DC
- 550uA quiescent current
- 114mm diameter, 132mm deep



Hi-Output Wall Sounder
Part Number CON430A/CX/DR/65

Hi-Output 103dB(A) Wall Sounder, IP65, CON430A/CX/DR/65

- 103dB(A) sound output @ 1m
- Weather resistant to IP65
- Onboard short-circuit loop isolator.
- Group addressing facility allows multiple devices to operate simultaneously
- 5mA alarm current @24VDC
- 7 selectable volume levels
- Up to 15 selectable tone pairs
- 550uA quiescent current
- 114mm diameter, 132mm deep

SOUNDERS & BEACONS (VADS)



Intelligent Open Area Sounder
Part Number 55000-001

INTELLIGENT OPEN AREA SOUNDER, 55000-001

The Intelligent Open-Area Sounder is designed for use in open areas and includes the following features

- Loop-powered
- Self-test fault monitoring
- Choice of tones
- IP65 rated
- Group addressing and synchronisation of alarm
- Comes with an isolating base as standard
- Output is 100dB(A) at 90°
- Complies with EN54-3 (2001)



Intelligent Open Area Beacon
Part Number 55000-009

INTELLIGENT OPEN AREA BEACON, RED LENS 55000-009

The Intelligent Open-Area Beacon is designed for use in situations where there is a risk that sounders will not be heard. It is weatherproof, can be used outside and includes the following features. A version with a clear lens is also available (55000-010)

- Loop-powered
- Self-test fault monitoring
- IP65 rated
- Group addressing and synchronisation of alarm
- Comes with an isolating base as standard
- Complies with EN54-3 (2001)



Intelligent Open Area Sounder Beacon
Part Number 55000-005

INTELLIGENT OPEN AREA SOUNDER BEACON, RED LENS, 55000-005

The Intelligent Open-Area Sounder Beacon is designed for use in open areas and includes the following features. A version with a clear lens is also available (55000-006)

- Loop-powered
- Gives two functions at one point
- Self-test fault monitoring
- Choice of tones
- IP65 rated
- Group addressing and synchronisation of alarm
- Comes with an isolating base as standard
- Complies with EN54-3 (2001)

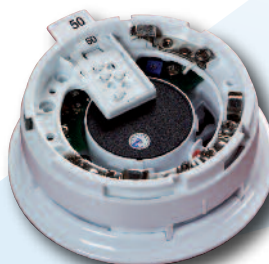


Integrated Base Sounder
Part Number 45681-702IMC

INTEGRATED BASE SOUNDER, 45681-702IMC

A multifunctional device that incorporates a sounder and a short-circuit isolator. It is suitable for use with our XPERT-card detectors only or as a stand-alone unit if using our 45681-292 cap.

- Loop-powered
- Two tone ranges
- Synchronisation of Alert and Evacuate tones
- Integrated base
- Individual and group addressing
- Unique acoustic self-test
- Complies with EN54-3 (2001)



Ancillary Base Sounder
Part Number 45681-276

ANCILLARY BASE SOUNDER, 45681-276

The Ancillary Base Sounder is a local-area sounder designed for indoor use. Suitable for use only with our XPERT-card addressed detectors.

- Guaranteed sound output of 85db(A) at 1 metre
- Current consumption only 3mA
- Loop powered
- Responds to signals from the associated detector - does not have an address of its own
- Adjustable volume control